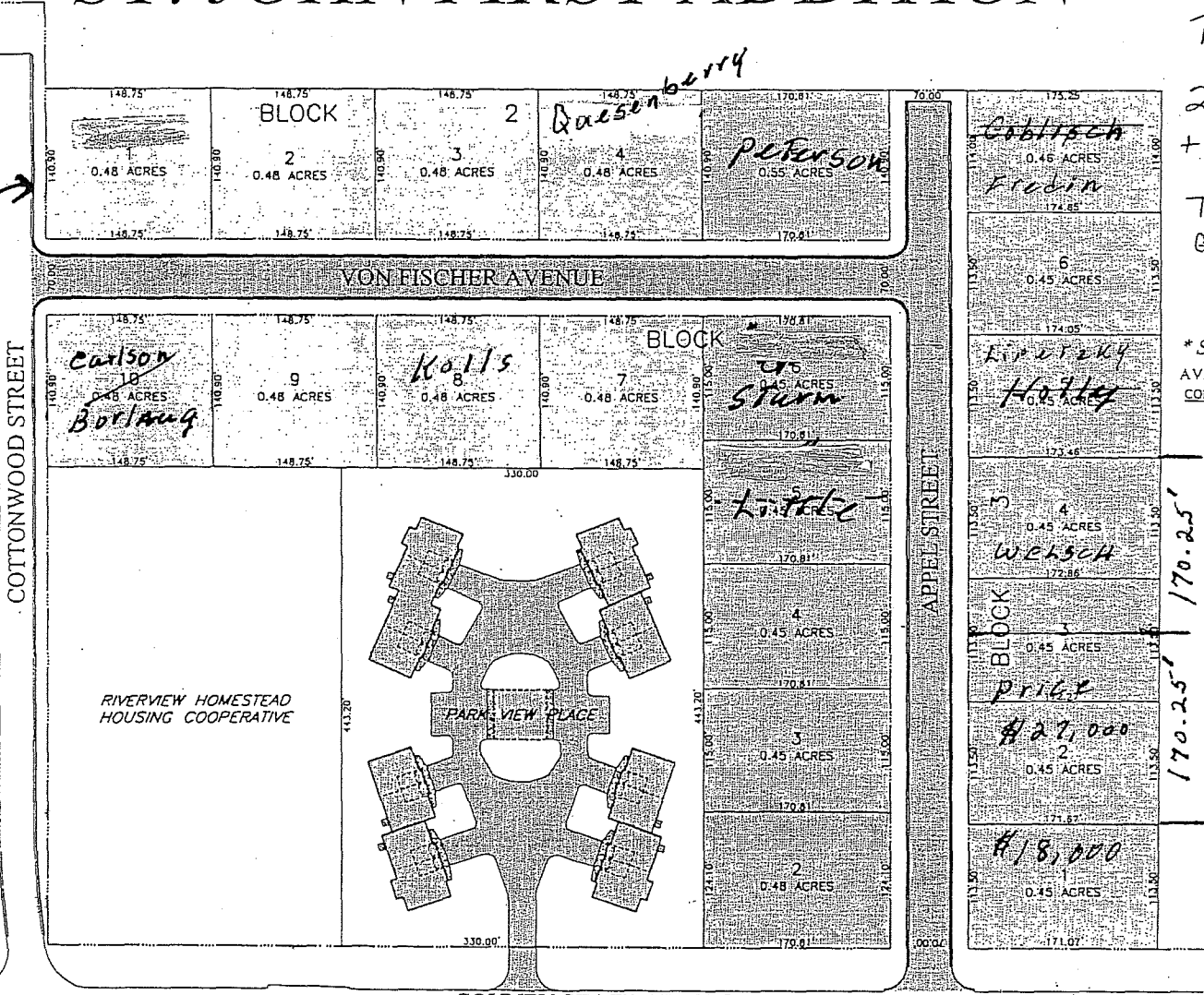


ALL LOTS NOT MARKED ARE FOR SALE, PRICE \$18,000. THIS PRICE PAYS ALL ASSESSMENTS IN FULL.

ST. JOHN FIRST ADDITION



T.I.F. qualify -
70,200
2 Adults - 64,500
+ 1 additional - 24,175
80,500
Total Household
Gross Taxable Income

* SINGLE-FAMILY HOUSING *
AVAILABLE LOT SALE INFORMATION
CONTACT:

SPRINGFIELD ECONOMIC DEVELOPMENT AUTHORITY
2 E Central Street
Springfield, MIN 56067-1400
Contacts:
Mark Veglihn - EDA Consultant
Kathleen Tillberg - City Manager
Telephone: (507) 723-3500

F+M. BANK, INC.
AVAILABLE LOT SALE INFORMATION
CONTACT:

BLOCK #	LOT	AREA
1	7	0.45 Acres
1	8	0.45 Acres
1	9	0.45 Acres
1	10	0.45 Acres
2	1	0.45 Acres
2	2	0.45 Acres
2	3	0.45 Acres
2	4	0.45 Acres

BLOCK #	LOT	AREA
1	2	0.45 Acres
1	3	0.45 Acres
1	4	0.45 Acres
1	5	0.45 Acres
1	6	0.45 Acres
2	5	0.55 Acres
3	1	0.45 Acres
3	2	0.45 Acres
3	3	0.45 Acres
3	4	0.45 Acres
3	5	0.45 Acres
3	6	0.45 Acres
3	7	0.45 Acres

170.25'
170.25'
170.25'

1/2 of 3

Plot #1

PREFER THE FINAL PLAT OF ST. JOHN FIRST ADDITION FOR PLATTED LOT DIMENSIONS.